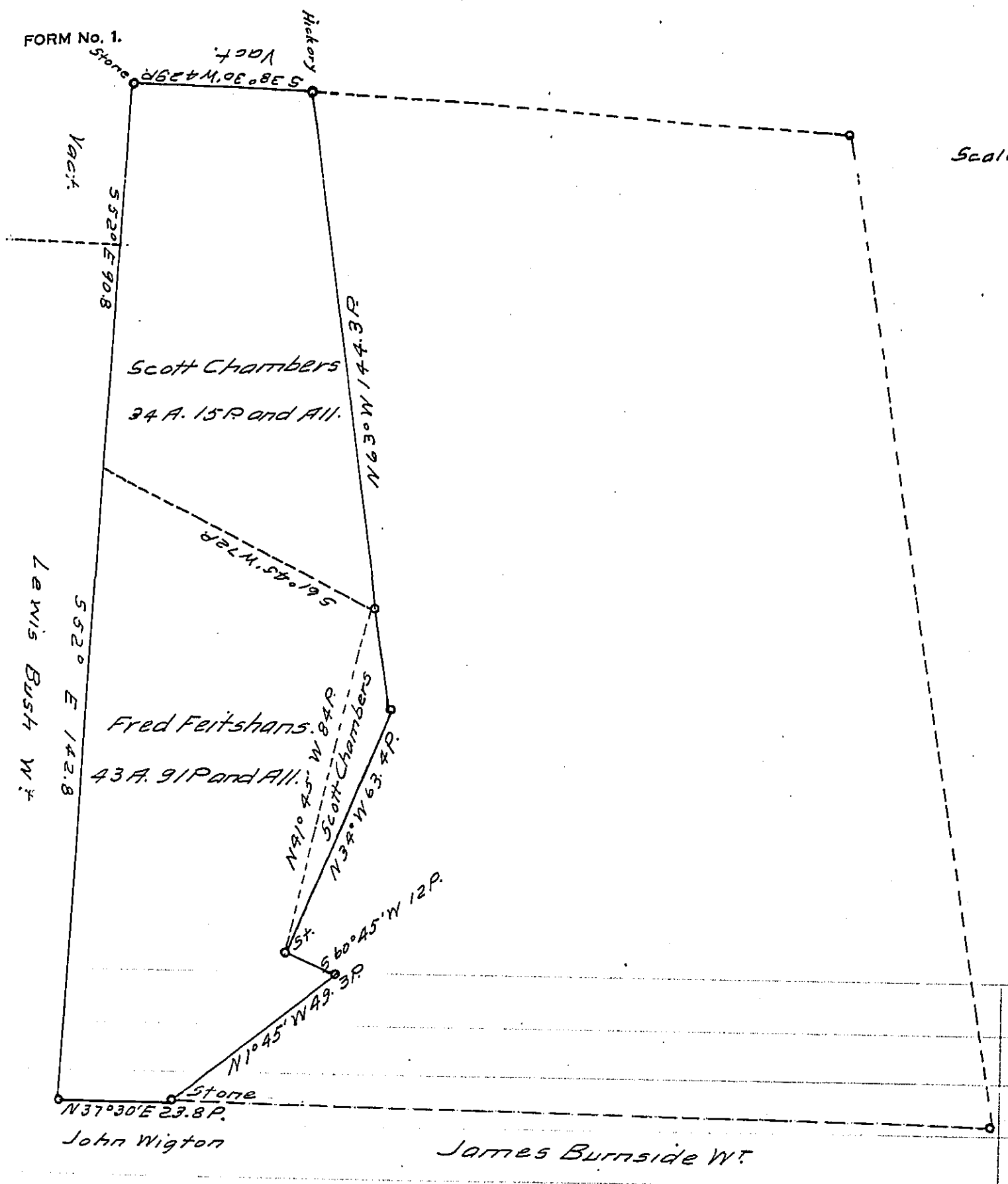


FORM No. 1.

Scale 1" = 600'



A Draft of a tract of land situated in the township of Payne and County of Indiana, containing 34 A. 15 P. ^{or} 43 A. 91 P. acres respectively perches and allowance of six per cent. for roads, etc. Surveyed for S. Chambers and F. Feitshans the 2^d day of May 1904, it being part of a larger tract containing 289 A. acres, 40 P. perches and allowance, originally surveyed in pursuance of a warrant granted to Andrew Boggs dated the 14th day of April 1774. Hiram Smith

To Hon. Henry Houck,
Secretary of Internal Affairs.

County Surveyor.

IN TESTIMONY that the above is a copy of the original remaining on file in the Department of Internal Affairs of Pennsylvania, made conformably to an Act of Assembly approved the 16th day of February, 1833, I have hereunto set my Hand and caused the Seal of said Department to be affixed at Harrisburg, this third day of February 1906.

Henry Houck
Secretary of Internal Affairs.